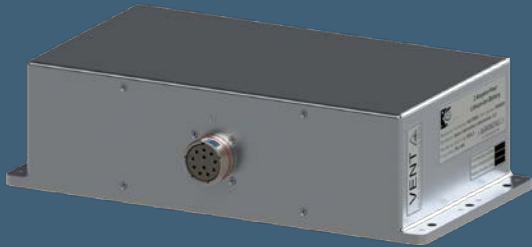


## 52Ah Intelli-Pack®



## Li-Ion Battery

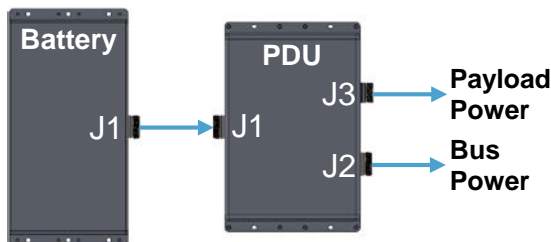
## Battery Specifications

<b>Cell Arrangement</b>	8s2p Li-Ion Intelli-Pack®
<b>Cell Chemistry</b>	Ultra-High Energy NMC, 248 Wh/Kg
<b>Voltage Range</b>	33.6 – 22.4 Vdc, Unregulated
<b>Capacity</b>	52 Ah Beginning-of-Life
<b>Cycle Life</b>	1,400 Cycles to End-of-Life
<b>Weight Max</b>	11.9 kg (26.2 lbs.)
<b>Dimensions</b>	7.0" W x 14.0" L x 5.5" H (with flanges)
<b>Steady State Load</b>	104A (2C)
<b>Pulse Load</b>	208A (4C), < 10 second
<b>Telemetry</b>	RS-422 (1 Hz, broadcast only)
<b>Protection and Safety Features</b>	<ul style="list-style-type: none"> <li>Cell &amp; Pack Level Electrical Protection</li> <li>Vibration and Flame Suppressing Foam</li> <li>Durable Aluminum Enclosure</li> </ul>
<b>Temp Range</b>	-40 °C to +60 °C (Environment)

## Li-Ion Polymer Intelli-Pack® Battery Features

- Ultra-High Energy Density Li-Ion Cell Pack with Integrated Heaters for Reduced System Mass
- Includes Internal Class III BMS PCBA with Integrated 38999 Connectors for High Reliability
- BMS Protects, Balances, and Monitors Every Cell for Safe Ground and Checkout Operations
- Discharge Protection Override Enables Uninterrupted Discharge During Mission Critical Operations
- Heritage Structure Protects Cells and is Flight Proven to Survive Extreme Aerospace Environments
- Vibration and Fire Suppressing Foam is built around Cell Packs for Protection and Safety

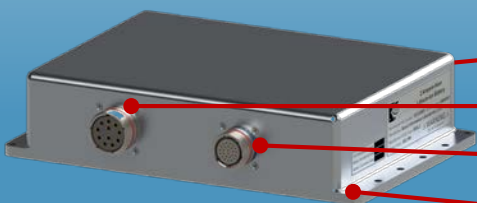
## System Interface Diagram



## Power Distribution Unit Specs

<b>Input</b>	33.6 Vdc – 22.4 Vdc Unregulated
<b>Output</b>	+3.3 Vdc, 3.3W Max and +5Vdc, 10 Watts Max 12 Vdc, 120 Watts Max 28 Vdc, 120 Watts Max 180 Vdc, 2000 Watts Max
<b>Weight Max</b>	4.3 kg (9.5 lb.)
<b>Dimensions</b>	8.0" W x 14" L x 3.0" H (with flanges)
<b>Temp Range</b>	-40 °C to +85 °C (Environment)

## Power Distribution Unit



- Li-Ion Intelli-Pack® Input at J1 Connector (behind)
- Regulated 180Vdc & 28Vdc Output at J2 for Payload
- Regulated 3.3, 5 and 12 Vdc & Battery Voltage at J3
- Flight Proven Housing Similar to Intelli-Pack® Battery