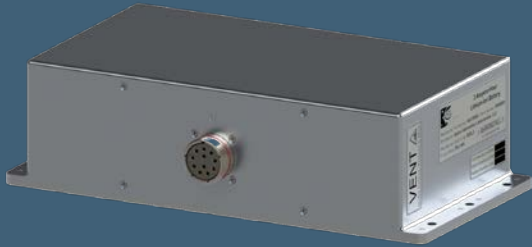


52Ah Intelli-Pack®



Li-Ion Battery

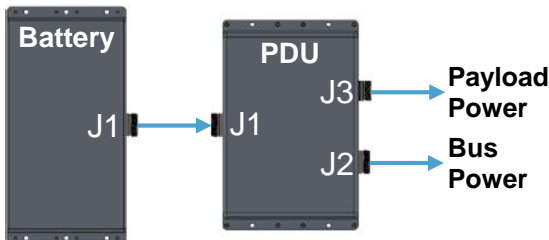
Battery Specifications

Cell Arrangement	8s2p Li-Ion Intelli-Pack®
Cell Chemistry	Ultra-High Energy NMC, 248 Wh/Kg
Voltage Range	33.6 – 22.4 Vdc, Unregulated
Capacity	52 Ah Beginning-of-Life
Cycle Life	1,400 Cycles to End-of-Life
Estimated Weight	10.4 kg (23 lbs.)
Dimensions	7.0" W x 14.0" L x 5.5" H
Steady State Load	104A (2C)
Pulse Load	208A (4C), < 10 second
Telemetry	RS-422 (1 Hz, broadcast only)
Protection and Safety Features	<ul style="list-style-type: none"> Cell & Pack Level Electrical Protection Vibration and Flame Suppressing Foam Durable Aluminum Enclosure
Temp Range	-40 °C to +60 °C (Environment)

Li-Ion Polymer Intelli-Pack® Battery Features

- Ultra-High Energy Density Li-Ion Cell Pack with Integrated Heaters for Reduced System Mass
- Includes Internal Class III BMS PCBA with Integrated 38999 Connectors for High Reliability
- BMS Protects, Balances, and Monitors Every Cell for Safe Ground and Checkout Operations
- Discharge Protection Override Enables Uninterrupted Discharge During Mission Critical Operations
- Heritage Structure Protects Cells and is Flight Proven to Survive Extreme Aerospace Environments
- Vibration and Fire Suppressing Foam is built around Cell Packs for Protection and Safety

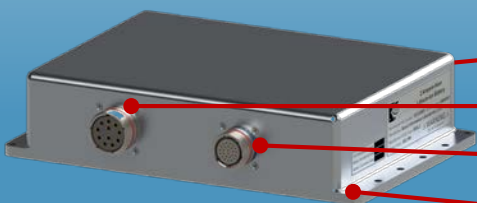
System Interface Diagram



Power Distribution Unit Specs

Input	33.6 Vdc – 22.4 Vdc Unregulated
Output	+3.3 Vdc, 5W Max and +5Vdc, 50 Watts Max 12 Vdc, 50 Watts Max 28 Vdc, 120 Watts Max 180 Vdc, 1800 Watts Max
Estimated Weight	3.75 kg (8.25 lb.)
Dimensions	8.0" W x 12.5" L x 3.0" H
Temp Range	-40 °C to +85 °C (Environment)

Power Distribution Unit



- Li-Ion Intelli-Pack® Input at J1 Connector (behind)
- Regulated 180Vdc & 28Vdc Output at J2 for Payload
- Regulated 12Vdc, 5Vdc & Unregulated Battery Voltage at J3
- Flight Proven Housing Similar to Intelli-Pack® Battery